

NUTAN VIDYA PRASARAK MANDAL'S
ARTS, COMMERCE AND SCIENCE
COLLEGE

LASALGAON TAL. NIPHAD,

DIST.NASHIK 422 306 (MAHARASHTRA)



INTERNAL QUALITY ASSURANCE CELL

(AQAR)

ACADEMIC YEAR: 2017-18

The Annual Quality Assurance Report (AQAR) of the IQAC

All NAAC accredited institutions will submit an annual self-reviewed progress report to NAAC, through its IQAC. The report is to detail the tangible results achieved in key areas, specifically identified by the institutional IQAC at the beginning of the academic year. The AQAR will detail the results of the perspective plan worked out by the IQAC. (Note: The AQAR period would be the Academic Year. For example, July 1, 2012 to June 30, 2013)

Part – A

I. Details of the Institution

1.1 Name of the Institution	Nutan Vidya Prasarak Mandal's Arts, Commerce and Science College Lasalgaon
1.2 Address Line 1	At Post- Lasalgaon Tal-Niphad Dist.Nashik
Address Line 2	
City/Town	Lasalgaon
State	Maharashtra
Pin Code	422306
Institution e-mail address	lasalgaon_college@rediffmail.com
Contact Nos.	02550 266062
Name of the Head of the Institution:	Dr. Dinesh Prabhakar Naik
Tel. No. with STD Code:	02550 266062
Mobile:	9822722814

Name of the IQAC Co-ordinator:

Dr. Nikam Sanjay Martand

Mobile:

9890204871

IQAC e-mail address:

iqaclasalgaon@rediffmail.com

1.3 NAAC Track ID (For ex. MHCOGN 18879): **MHCOGN10617**

1.4 Website address:

www.lasalgaoncollege.com

Web-link of the AQAR:

www.lasalgaoncollege.com /IQAC/AQAR2017-18

For ex. <http://www.ladykeanecollege.edu.in/AQAR201213.doc>

1.5 Accreditation Details

Sr. No.	Cycle	Grade	CGPA	Year of Accreditation	Validity Period
1	1 st Cycle	C++		2004	2009
2	2 nd Cycle	A	3.28	2011	2016
3	3 rd Cycle	A	3.30	2017	2022

1.6 Date of Establishment of IQAC: DD/MM/YYYY

01/12/2009

1.7 AQAR for the year (*for example 2010-11*)

2017-18

1.8 Details of the previous year's AQAR submitted to NAAC after the latest Assessment and Accreditation by NAAC (*for example AQAR 2010-11 submitted to NAAC on 12-10-2011*)

- i. AQAR 2011-12 Submitted to NAAC on 16/12/2013 (DD/MM/YYYY)
- ii. AQAR 2012-13 Submitted to NAAC on 29/11/2014 (DD/MM/YYYY)
- iii. AQAR2013-14 Submitted to NAAC on 07/10/2015 (DD/MM/YYYY)
- iv. AQAR2014-15 Submitted to NAAC on 03/05/2016 (DD/MM/YYYY)
- v. AQAR2015-16 Submitted to NAAC on 21/12/2016 (DD/MM/YYYY)
- vi. AQAR2016-17 Submitted to NAAC on 15/06/2017 (DD/MM/YYYY)

1.9 Institutional Status

University

State

Central

Deemed

Private

Affiliated College Yes No

Constituent College Yes No

Autonomous college of UGC Yes No

Regulatory Agency approved Institution Yes No

(eg. AICTE, BCI, MCI, PCI, NCI)

Type of Institution Co-education Men Women

Urban Rural Tribal

Financial Status Grant-in-aid UGC 2(f) UGC 12B

Grant-in-aid + Self Financing Totally Self-financing

1.10 Type of Faculty/Programme

Arts Science Commerce Law PEI (Phys Edu)

TEI (Edu) Engineering Health Science Management

Others (Specify)

1.11 Name of the Affiliating University (*for the Colleges*)

Savitribai Phule Pune
University,Pune

1.12 Special status conferred by Central/ State Government-- UGC/CSIR/DST/DBT/ICMR etc

Autonomy by State/Central Govt. / University

University with Potential for Excellence UGC-CPE

DST Star Scheme UGC-CE

UGC-Special Assistance Programme DST-FIST

UGC-Innovative PG programmes Any other (*Specify*)

UGC-COP Programmes

2. IQAC Composition and Activities

2.1 No. of Teachers

2.2 No. of Administrative/Technical staff

2.3 No. of students

2.4 No. of Management representatives

2.5 No. of Alumni

2.6 No. of any other stakeholder and
community representatives

2.7 No. of Employers/ Industrialists

2.8 No. of other External Experts

2.9 Total No. of members

2.10 No. of IQAC meetings held

2.11 No. of meetings with various stakeholders: No. Faculty

Non-Teaching Staff Students Alumni Others

2.12 Has IQAC received any funding from UGC during the year? Yes No

If yes, mention the amount

2.13 Seminars and Conferences (only quality related)

(i) No. of Seminars/Conferences/ Workshops/Symposia organized by the IQAC

Total Nos. International National State

Institution Level

(ii) Themes

2.14 Significant Activities and contributions made by IQAC

2.15 Plan of Action by IQAC/Outcome

The plan of action chalked out by the IQAC in the beginning of the year towards quality enhancement and the outcome achieved by the end of the year *

Plan of Action	Achievements
To arrange the meetings of IQAC	The meetings of IQAC were arranged.
To collect the action plans from faculty members.	Action plans from faculty members were collected
To submit AQAR to NAAC	AQAR of academic year 2015-16 was prepared according to the new guidelines and submitted online to the NAAC.
To upload the online information of All India Survey of Higher Education on web portal.	Online information of All India Survey of Higher Education was uploaded on the web site.
To update the college website.	The work is in progress.
To prepare for NAAC peer team visit	Preparation of NAAC peer team visit was done.
To arrange NAAC peer team visit.	NAAC peer team visit was organized on 22nd and 23rd Sept. 2017 and college was accredited with 3.30 CGPA by the NAAC on 30th Oct. 2017
To apply for NIRF	Applied for NIRF ranking

* Attached the Academic Calendar of the year as **Annexure II**

2.15 Whether the AQAR was placed in statutory body Yes No

Management Syndicate Any other body

Provide the details of the action taken

Part – B

Criterion – I

I. Curricular Aspects

1.1 Details about Academic Programmes

Level of the Programme	Number of existing Programmes	Number of programmes added during the year	Number of self-financing programmes	Number of value added / Career Oriented programmes
PhD	NIL	NIL	NIL	NIL
PG	NIL	NIL	NIL	NIL
UG	14	NIL	06	NIL
PG Diploma	NIL	NIL	NIL	NIL
Advanced Diploma	NIL	NIL	NIL	NIL
Diploma	NIL	NIL	NIL	NIL
Certificate	NIL	NIL	NIL	NIL
Others	NIL	NIL	NIL	NIL
Total	14	NIL	06	NIL
Interdisciplinary	NIL	NIL	NIL	NIL
Innovative	NIL		NIL	NIL

1.2 (i) Flexibility of the Curriculum: CBCS/Core/Elective option / Open options

(ii) Pattern of programmes:

Pattern	Number of programmes
Trimester	NIL
Semester	05
Annual	09

1.3 Feedback from stakeholders* Alumni Parents Employers Students
(On all aspects)

Mode of feedback: Online Manual Co-operating schools (for PEI)

* provided an analysis of the feedback in the Annexure III

1.4 Whether there is any revision/update of regulation or syllabi, if yes, mention their salient aspects.

NO

1.5 Any new Department/Centre introduced during the year. If yes, give details.

NIL

Criterion – II

2. Teaching, Learning and Evaluation

2.1 Total No. of permanent faculty

Total	Asst. Professors	Associate Professors	Professors	Others (Principal)
27	24	02	NIL	01

2.2 No. of permanent faculty with Ph.D.

14

2.3 No. of Faculty Positions Recruited (R) and Vacant (V) during the year

Asst. Professors		Associate Professors		Professors		Others		Total	
R	V	R	V	R	V	R	V	R	V
NIL	07	NIL	NIL	NIL	NIL	NIL	NIL	NIL	07

2.4 No. of Guest and Visiting faculty and Temporary faculty

NIL NIL 25

2.5 Faculty participation in conferences and symposia:

No. of Faculty	International level	National level	State level
Attended	03	07	03
Presented papers	NIL	01	NIL
Resource Persons	NIL	NIL	02

2.6 Innovative processes adopted by the institution in Teaching and Learning:

Use of ICT in teaching, presentation and Interactive sessions of students, Soft skill training programs

2.7 Total No. of actual teaching days during this academic year:

180

2.8 Examination/ Evaluation Reforms initiated by the Institution (for example :Open Book Examination, Bar Coding, Double Valuation, Photocopy, Online Multiple Choice Questions):- First Year Examinations, term end and internal are conducted at college level in fair and transparent way as per the guidelines of affiliating University. Revaluation and rechecking process is followed to give justice to students.

2.9 No. of faculty members involved in curriculum restructuring/revision/syllabus development as member of Board of Study/Faculty/Curriculum Development workshop

01 NIL NIL

2.10 Average percentage of attendance of students

80 %

2.11 Course/Programme wise distribution of pass percentage:

Title of the Programme	Total no. of students appeared	Division				
		Distinction %	I %	II %	III %	Pass %
B.SC Botany	13	15.38	23.07	15.38	00	7.69
B.SC Chemistry	40	27.5	30	00	00	00
B.SC Zoology	20	45	15	00	00	00
B.COM	89	14.66	29.21	26.97	1.12	00
B.A. English	27	3.7	22.22	29.62	11.11	7.4
B.A. Psychology	27	00	14.81	7.40	3.70	00
B.A. Geography	23	17.74	21.74	4.35	00	00
B.A. Hindi	22	9	18.18	5	5	00
B.A. Economics	15	6.67	13.33	6.67	00	00
B.A. Marathi	18	5.55	16.66	11.11	00	5.55
B.A. Functional English	14	7.14	28.57	14.28	14.28	14.28
B.A. politics	18	41.66	33.33	25	00	00
B.SC (Com)	23	13.04	21.73	00	00	34.78
B.C.A.	08	12.5	25	50	00	87.5

2.12 How does IQAC Contribute/Monitor/Evaluate the Teaching & Learning processes:

- API/PBAS verification
- Use of ICT in Teaching & Learning processes
- Evaluation is done according to norms of university
- Internal test for each and every semester is taken for continuous evaluation
- Assignment and projects are given to the students.
- Practical oriented Teaching & Learning processes
- Teaching diary

2.13 Initiatives undertaken towards faculty development

<i>Faculty / Staff Development Programmes</i>	<i>Number of faculty benefitted</i>
Refresher courses	01
UGC – Faculty Improvement Programme	NIL
HRD programmes	NIL
Orientation programmes	02
Faculty exchange programme	NIL
Staff training conducted by the university	NIL
Staff training conducted by other institutions	NIL
Summer / Winter schools, Workshops, etc.	NIL
Others	NIL

2.14 Details of Administrative and Technical staff

Category	Number of Permanent Employees	Number of Vacant Positions	Number of permanent positions filled during the Year	Number of positions filled temporarily
Administrative Staff	13	04	NIL	03
Technical Staff	05	NIL	NIL	NIL

Criterion – III

3. Research, Consultancy and Extension

3.1 Initiatives of the IQAC in Sensitizing/Promoting Research Climate in the institution

IQAC promotes faculty members to register for Ph.D .The Research committee functions as a supervisory body that ensures quality in academic research.

3.2 Details regarding major projects

	Completed	Ongoing	Sanctioned	Submitted
Number	NIL	NIL	NIL	NIL
Outlay in Rs. Lakhs	NIL	NIL	NIL	NIL

3.3 Details regarding minor projects

	Completed	Ongoing	Sanctioned	Submitted
Number	NIL	NIL	NIL	NIL
Outlay in Rs. Lakhs	NIL	NIL	NIL	NIL

3.4 Details on research publications

	International	National	Others
Peer Review Journals	12	01	NIL
Non-Peer Review Journals	NIL	NIL	NIL
e-Journals	02	NIL	NIL
Conference proceedings	NIL	NIL	NIL

3.5 Details on Impact factor of publications:

Range Average h-index Nos. in SCOPUS

3.6 Research funds sanctioned and received from various funding agencies, industry and other organisations

Nature of the Project	Duration Year	Name of the funding Agency	Total grant sanctioned	Received
Major projects	NIL	NIL	NIL	NIL
Minor Projects	NIL	NIL	NIL	NIL
Interdisciplinary Projects	NIL	NIL	NIL	NIL
Industry sponsored	NIL	NIL	NIL	NIL
Projects sponsored by the University/ College	NIL	NIL	NIL	NIL
Students research projects <i>(other than compulsory by the University)</i>	NIL	NIL	NIL	NIL
Any other(Specify)	NIL	NIL	NIL	NIL
Total	NIL	NIL	NIL	NIL

3.7 No. of books published i) With ISBN No. Chapters in Edited Books

ii) Without ISBN No.

3.8 No. of University Departments receiving funds from

UGC-SAP CAS DST-FIST
 DPE DBT Scheme/funds

3.9 For colleges

Autonomy CPE DBT Star Scheme
 INSPIRE CE Any Other (specify)

3.10 Revenue generated through consultancy

3.11 No. of conferences organized by the Institution

Level	International	National	State	University	College
Number	NIL	NIL	NIL	NIL	02
Sponsoring agencies	NIL	NIL	NIL	NIL	S.P.P.U. Pune

3.12 No. of faculty served as experts, chairpersons or resource persons

3.13 No. of collaboration International National Any other

3.14 No. of linkages created during this year

3.15 Total budget for research for current year in lakhs:

From Funding agency From Management of University/College

Total

3.16 No. of patents received this year

Type of Patent		Number
National	Applied	NIL
	Granted	NIL
International	Applied	NIL
	Granted	NIL
Commercialised	Applied	NIL
	Granted	NIL

3.17 No. of research awards/ recognitions received by faculty and research fellows Of the institute in the year

Total	International	National	State	University	Dist	College
NIL	NIL	NIL	NIL	NIL	NIL	NIL

3.18 No. of faculty from the Institution who are Ph. D. Guides and students registered under them 03
10

3.19 No. of Ph.D. awarded by faculty from the Institution Nil

3.20 No. of Research scholars receiving the Fellowships (Newly enrolled + existing ones)

JRF NIL SRF NIL Project Fellows NIL Any other NIL

3.21 No. of students Participated in NSS events:

University level 38 State level 11
National level NIL International level NIL

3.22 No. of students participated in NCC events:

University level NIL State level 55
National level 04 International level NIL

3.23 No. of Awards won in NSS:

University level NIL State level NIL
National level NIL International level NIL

3.24 No. of Awards won in NCC:

University level NIL State level 24
National level 02 International level NIL

3.25 No. of Extension activities organized

University forum NIL College forum 05
NCC 03 NSS 07 Any other NIL

3.26 Major Activities during the year in the sphere of extension activities and Institutional Social Responsibility

- Hemoglobin checkup camp for girl's students of the college.
- Blood Donation Camp.
- Oath taking programme on Communal Harmony.
- Considering the dehumanizing factors of today's world, transforming human beings into machine, our college gives emphasis on inculcating universal human values in students by conducting common assembly for prayer and National Anthem every day.

- Azolla cultivation project was maintained by department of Botany for developing awareness and updating knowledge of the students and farmers by providing the seedlings to spread of cultivation practices of Azolla in the society.
- N.S.S. Special Winter Camp.
- Health checkup camp for first year students was organized.

Criterion – IV

4. Infrastructure and Learning Resources

4.1 Details of increase in infrastructure facilities:

Facilities	Existing	Newly created	Source of Fund	Total
Campus area	32	Nil	Management	32
Class rooms	35	4	Management	39
Laboratories	12	Nil	Management	12
Seminar Halls	02	Nil	Management	02
No. of important equipments purchased (\geq 1-0 lakh) during the current year.	07	Nil	Management	07
Value of the equipment purchased during the year (Rs. in Lakhs)	19.16726	Nil	Management	19.16726
Others	NIL	Nil	Management	Nil

4.2 Computerization of administration and library

- Office administration is fully computerized with Vruddhi Software
- Use of bar coding system in library
- Information display and notification

4.3 Library services:

	Existing		Newly added		Total	
	No.	Value	No.	Value	No.	Value
Text Books	11324	1130164	42	6033	11366	1136197
Reference Books	28685	2236141	44	13282	28729	2249423
e-Books & e-Journals	135000	5750	3135000	5750	3135000	5750
Journals	68	49797	NIL	NIL	68	49797
Digital Database	NIL	NIL	NIL	NIL	NIL	NIL
CD & Video	325	NIL	NIL	NIL	325	NIL
Others (specify News Papers)	12	16260	NIL	NIL	12	16260

4.4 Technology up gradation (overall)

	Total Computers	Computer Labs	Internet	Browsing Centres	Computer Centres	Office	Depart-ments	Others
Existing	91	01	20	NIL	NIL	02	14	NIL
Added	15	NIL	NIL	NIL	NIL	NIL	NIL	NIL
Total	106	01	20	NIL	NIL	02	14	NIL

4.5 Computer, Internet access, training to teachers and students and any other programme for technology up gradation (Networking, e-Governance etc.)

Computers: 106 Internet access: 20 VPN connections for student and teachers
--

4.6 Amount spent on maintenance in lakhs:

i) ICT	0.78525
ii) Campus Infrastructure and facilities	1.27264
iii) Equipments	0.34598
iv) Others	NIL
Total:	2.40387

Criterion – V

5. Student Support and Progression

5.1 Contribution of IQAC in enhancing awareness about Student Support Services

- Circulating the information through notice and e mail
- Preparation of action plan by every faculty member at the beginning of academic year.

5.2 Efforts made by the institution for tracking the progression

- Parent teacher meeting is held. Necessary steps are taken based on parent feedback.
- Self appraisal (API)
- Suggestion Box.

5.3 (a) Total Number of students

UG	PG	Ph. D.	Others
1556	NIL	NIL	NIL

(b) No. of students outside the state

NIL

(c) No. of international students

NIL

Men	No	%	Women	No	%
	643	41.33		913	58.67

Last Year						This Year					
General	SC	ST	OBC	Physically Challenged	Total	General	SC	ST	OBC	Physically Challenged	Total
875	121	40	529	04	1565	905	115	34	502	09	1556

Demand ratio

Dropout %

5.4 Details of student support mechanism for coaching for competitive examinations (If any)

- Career guidance cell and competitive examinations cell leads to guide competitive examinations and arranged coaching classes.
- Started self-study Groups of students.
- Conducted general knowledge examinations.
- Provided online e-resources for the students.
- Organized workshop for students.
- Free internet access given to enrolled students.

No. of students beneficiaries

400

5.5 No. of students qualified in these examinations

NET SET/SLET GATE CAT

IAS/IPS etc State PSC UPSC Others

5.6 Details of student counselling and career guidance

- Regular counseling centre is working under Career guidance cell in the college.

No. of students benefited

5.7 Details of campus placement

<i>On campus</i>			<i>Off Campus</i>
Number of Organizations Visited	Number of Students Participated	Number of Students Placed	Number of Students Placed
01	65	02	24

5.8 Details of gender sensitization programmes

- Workshop on Personality Development of Girls students was organized by Student Welfare Mandal.

5.9 Students Activities

5.9.1 No. of students participated in Sports, Games and other events

State/ University level National level International level

No. of students participated in cultural events

State/ University level National level International level

5.9.2 No. of medals /awards won by students in Sports, Games and other events

Sports : State/ University level National level International level

Cultural: State/ University level National level International level

5.10 Scholarships and Financial Support

	Number of students	Amount
Financial support from institution	NIL	NIL
Financial support from government	NIL	NIL
Financial support from other sources	43	3, 11, 000/-
Number of students who received International/ National recognitions	NIL	NIL

5.11 Student organised / initiatives

Fairs : State/ University level National level International level

Exhibition: State/ University level National level International level

5.12 No. of social initiatives undertaken by the students

5.13 Major grievances of students (if any) redressed: NIL

Criterion – VI

6. Governance, Leadership and Management

6.1 State the Vision and Mission of the institution

Vision: “Commitment to prepare a complete person with qualities to uplift the society and the nation.”

Mission: “Quality education with emphasis on all round development and inculcation of culture, ethics and universal human values.”

6.2 Does the Institution has a management Information System

Yes, institution has the management information system (MIS). For the information system institution has purchased a software “**VRIDDHI**” with the cost of Rs. 88,000/-. Meetings are regularly held with representatives of the management. Their suggestions are implemented in financial as well as administrative matters. The management is apprised of the various activities, new developments, achievements of teachers and students as well as student progression through yearly reports from every department, cell and committee. Management representatives make institutional and departmental visits.

6.3 Quality improvement strategies adopted by the institution for each of the following:

6.3.1 Curriculum Development

The need-based curriculum is prepared by the university with the help of expert groups and inviting suggestions from stakeholders such as students, teachers, industry etc. The institute encourages the teachers to participate in the seminar/workshops on curriculum development.

6.3.2 Teaching and Learning

The teachers use various innovative methods like group discussion, class room seminars, interactive learning etc along with the lecture method. Teachers use interactive method for special level student of all faculties. Institution has provided the basic infrastructure to the teachers and students. The college has separate well equipped auditorium / multipurpose hall with LCD projector, computer etc. Some of the departments have upgraded with LCD projector.

6.3.3 Examination and Evaluation

The college has separate well equipped examination department. This department makes plan about evaluation methods for every academic year according to guidelines of Savitribai Phule Pune University. The college conducts tutorials, tests, oral exams, term end exam and annual examination. The examination department makes the publicity of each examination, test and tutorial through the notice and display the notice on the black board. Term end exams are conducted on the college level according to the university guidelines. Answer papers are assessed by the concerned teachers in given time limit in the Central Assessment Programme. The programme of the annual examination is prepared by the University and we follow the guidelines.

6.3.4 Research and Development

The college has a research committee which helps to the teachers to make the various proposals like minor and major research project to UGC and BCUD. The committee also guides the students to participate in research competitions like *Avishkar*. The management of the college makes various efforts for the professional development of the faculty. Management gives incentive to teachers for organizing seminars as well as attending seminars, workshops, and conferences at state level, national and international level.

6.3.5 Library, ICT and physical infrastructure / instrumentation

The college library holds Books, Journals, and other learning material and technology and computer aided learning resources. We have well equipped central library as well as internet facility enabling teachers and students to access on line e-resources like N-List INFLIBNET. This enables students to get information, knowledge and the skills required. There is reading room facility. There are separate cubicles for boys and girls and teachers. A separate Journal section is made for study. Adjacent to the library, open reading facility is made available. The departments are provided with computers, internet, printers, USB, LCD projectors, digital cameras. Well equipped computer labs, a computer assisted language lab, departmental labs, audiovisual rooms facilitate the teaching learning process. There are adequate software and computational facilities to meet the needs of a growing institution.

6.3.6 Human Resource Management

Faculty and staff positions are filled in keeping with the norms of the S.P. Pune University, Pune and the Government of Maharashtra. When there is delay in filling retirement or leave vacancies, temporary faculties are recruited by the management.

6.3.7 Faculty and Staff recruitment

The institution follows the UGC norms for staff faculty recruitment. The institution also follows the rules regarding the recruitment as given by the Government of Maharashtra. Vacancies are advertised in leading newspapers and prescribed norms are strictly adhered to.

6.3.8 Industry Interaction / Collaboration

NIL

6.3.9 Admission of Students

Savitribai Phule University of Pune norms are strictly followed regarding the admission of students.

6.4 Welfare schemes for

Teaching	Credit society, Gratuity, Pension.
Non teaching	Credit society, Gratuity, Pension.
Students	Basic medical facility, insurance for students. Student welfare department is working for students

6.5 Total corpus fund generated

6.6 Whether annual financial audit has been done Yes No

6.7 Whether Academic and Administrative Audit (AAA) has been done?

Audit Type	External		Internal	
	Yes/No	Agency	Yes/No	Authority
Academic	No	NIL	Yes	Principal
Administrative	Yes	S.G.Pandit and Co, Nashik	Yes	Principal

6.8 Does the University/ Autonomous College declare results within 30 days?

For UG Programmes Yes No

For PG Programmes Yes No

6.9 What efforts are made by the University/ Autonomous College for Examination Reforms?

Being an affiliated college university rules are followed as far as examination procedure is concerned.

6.10 What efforts are made by the University to promote autonomy in the affiliated/constituent colleges?

NA

6.11 Activities and support from the Alumni Association

Institute has registered alumni association. Meetings of alumni association were organized and suggestions from them were taken into considerations.

6.12 Activities and support from the Parent – Teacher Association

Meetings of Parent – Teacher Association was organized and suggestions from them were taken into considerations.

6.13 Development programmes for support staff

1. Participation in various training programmes which are conducted by University.
2. Participation in refresher, orientation programmes.
3. Participation in seminar, workshop, conference.

6.14 Initiatives taken by the institution to make the campus eco-friendly

- The institution has a well maintained botanical garden.
- Our college was assessed and certified with ISO Integrated Management System (IMS).
- As a social responsibility, our institute installed Green Gym for providing community service to the society in the vicinity of college.
- Azolla cultivation project was maintained by department of Botany for developing awareness and updating knowledge of the students and farmers by providing the seedlings to spread of cultivation practices of Azolla in the society.
- Plastic is banned on the campus.
- Weed from college campus is used to vermicompost project.
- The college has started harnessing non conventional energy with solar photovoltaic on grid system.

Criterion – VII

7. Innovations and Best Practices

7.1 Innovations introduced during this academic year which have created a positive impact on the functioning of the institution. Give details.

- Structured transparency in governance was ensured.
- Some faculties organizing study/excursion tours.
- Department of competitive cell creating awareness regarding competitive examinations.
- Our college was assessed and certified with ISO Integrated Management System (IMS).
- The automatic weather station with Geography department informs day to day weather forecast through WhatsApp to all Grampanchayat official in the college periphery and on the website of the college.

7.2 Provide the Action Taken Report (ATR) based on the plan of action decided upon at the beginning of the year

- Yes, nearly 75% done as per plan.

7.3 Give two Best Practices of the institution (*please see the format in the NAAC Self-study Manuals*)

1. Common assembly: National anthem and prayer
2. automatic weather station

**Provided the details in annexure IV*

7.4 Contribution to environmental awareness / protection

- Environmental studies: subject is compulsory for the second year students.
- Projects on Environmental study are given to the students.
- The College conducted green audit.
- The college has installed Sanitary napkin vending machine with incinerator facility

7.5 Whether environmental audit was conducted? Yes No

7.6 Any other relevant information the institution wishes to add. (for example SWOC Analysis)

SWOC ANALYSIS

STRENGTHS:

1. Despite being the college located in rural area NAAC awarded “A” grade with CGPA of 3.28 that encourages continuous development of the College.
2. ISO 9001:2008 QMS and ISO 14001:2004 EMS certification.
3. Futurist and committed management.
4. Consistent up-gradation of infrastructure.
5. Commitment to execute social responsibility.
6. Separate and Spacious central library facility with e-resources.
7. Sensitizing students about various burning issues through extension activities.
8. Splendid playground, green gym and wide range of sports facilities for indoor and outdoor games.
9. GREEN CAMPUS
10. Recognized by numerous University and Government awards.
11. 100% value educated teaching, administrative and supportive staff.
12. Coped with volatile socio-eco-political and techno environment.
13. Equal opportunity to all.

WEAKNESS:

1. All Classrooms are not ICT enabled.
2. More number of non-permanent faculty.
3. Non availability of financial support from Alumni.
4. Insufficient funding for overall development.

OPPORTUNITIES:

1. To undertake research on locally relevant issues.
2. To strengthen skill development through collaborations.
3. To establish branding with quality and value education.
4. To retain the marginalized into main stream.
5. To obtain more funds for research projects.
6. To start NCC Unit for girl students.

CHALLENGES:

1. To introduce new vocational and professional courses.
2. Providing skill based graduates through conventional curriculum.
3. Retention of faculty to non-granted courses.
4. Making rural students proficient in English communication.

8. Plans of institution for next year

- Plan to improve infrastructure facility.
- To enrich the library by new periodicals, Journals and reference books.
- Laboratories to be equipped with new equipments and instruments.
- Improve the Gymkhana facilities.
- Beautification of college campus.



Name Dr .Nikam Sanjay Martand

Signature of the Coordinator, IQAC



Name Dr. Dinesh Prabhakar Naik

Signature of the Chairperson, IQAC

Abbreviations:

CAS	-	Career Advanced Scheme
CAT	-	Common Admission Test
CBCS	-	Choice Based Credit System
CE	-	Centre for Excellence
COP	-	Career Oriented Programme
CPE	-	College with Potential for Excellence
DPE	-	Department with Potential for Excellence
GATE	-	Graduate Aptitude Test
NET	-	National Eligibility Test
PEI	-	Physical Education Institution
SAP	-	Special Assistance Programme
SF	-	Self Financing
SLET	-	State Level Eligibility Test
TEI	-	Teacher Education Institution
UPE	-	University with Potential Excellence
UPSC	-	Union Public Service Commission
BCUD	-	Board of College and University Development

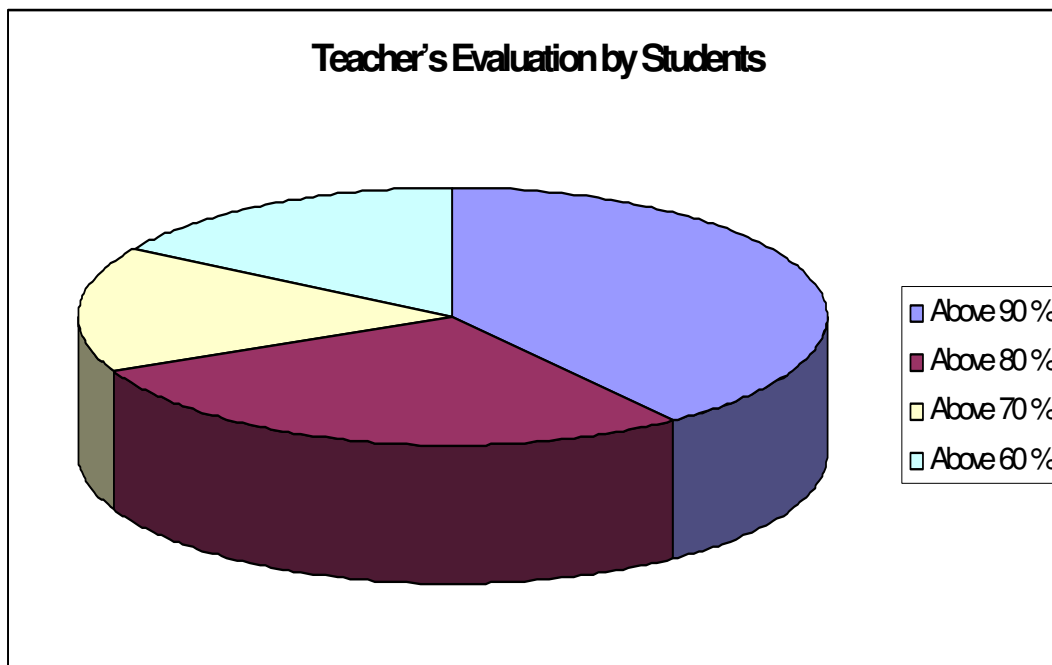
Academic calendar: 2017-18

Sr. No.	Month	Week	Event/Activity
1	June	3 rd and 4 th	Admission processes, Yoga programme
2	July	1 st to 4 th	Regular teaching, Enrollment of NSS, NCC and earn and Learn Scheme, Collecting Action Plans for various port folios, departments and individuals
3	August	1 st to 4 th	Inauguration of literary association, <i>Nakshtra</i> editorial board meeting, Organization of Marathon, celebration of sport day, Regular teaching, Examination committee meeting, Tutorials and Internal Assessment, NSS Orientation, One Day Camp NSS, Soft Skill Training Programme, Meeting of Women Harassment Cell, Screen movies based on literary texts
4	September	1 st to 4 th	Organizing classroom seminars, Regular teaching, Tutorials and Internal Assessment, Vidhyardhini manch expert lecture, Hindi Saptah, Ozone Day, NSS Week, Soft Skill Training Programme, Screen movies based on literary texts, Interdepartmental programmes, Student Council Election, Remedial teaching for students, NAAC peer team visit
5	October	1 st to 3 rd	Regular teaching, Internal Assessment, Blood Donation Camp, Internal Term end examination and Semester Exams, Career Guidance Workshop
6	November	1 st to 3 rd	Winter Vacation, Term End Examination paper assessment
7	December	1 st to 4 th	Workshop for students from <i>Nakshtra</i> editorial board, Inviting students article for <i>Nakshtra</i> magazine, Regular teaching, Tutorials, Annual Sport Camps, NSS Camp, college sport competition, Annual interclass sport events, Poetry reading and storytelling competition, Soft ball camp, Presentation competition by English department, Research competition participation, Cultural programme for lady students.
8	January	1 st to 4 th	Screening of Marathi drama, Inter zone tournaments, Participation in seminar/ workshop/ conference, Regular teaching, organizing 'Madhva mathematical competition', Tutorials and Internal Assessment, Annual Social Gathering, Traditional Day, Prize Distribution Ceremony, Study Tours, Yuva Saptah, Conduct Competitive Examination, Geography Day
9	February	1 st to 4 th	Regular teaching, Expert lecture for Marathi departmental students, Tutorials and Internal Assessment, Study Tours, Job training programme, visit akashvani center, industrial visit for functional English students, Workshop on MBA- CAT, English Speaking Course, Fill up Student feedback questionnaires
10	March	1 st to 4 th	Regular teaching, Tutorials and Internal Assessment, Organize Placement Camp, First Year university Examinations, Workshop for Girls Personality Development
11	April	1 st to 4 th	University Theory and Practical Examinations, Collecting Workouts from various port folios, departments and teachers, Central Assessment Programme for First Year, organization of sport camp
12	May		Summer Vacation, University Examinations, participation in University Central Assessment Programme, Result Declaration

Teacher's Evaluation Report

Teacher's evaluation by the students was held in the academic year 2017-2018. The analysis of the teachers is as

Sr. No	Evaluation in percentage	No. of teachers	Grades
1	Above 90 %	10	A ⁺⁺
2	Above 80 %	07	A ⁺
3	Above 70 %	04	A
4	Above 60 %	04	B ⁺⁺



The automatic weather station

Goal:

To inform day-to-day weather forecast to all *Grampanchayat* officials and farmers in the college periphery through WhatsApp group and to upload it on the college website.

The Context:

Our college is located in the rural area where farming is the main occupation. The farmers use to cultivate various seasonal crops. The crops are seriously affected by various insects, pest and adverse climate changes. To overcome such calamities, weather forecast is helping the farmers to increase the crop productivity.

The Practice:

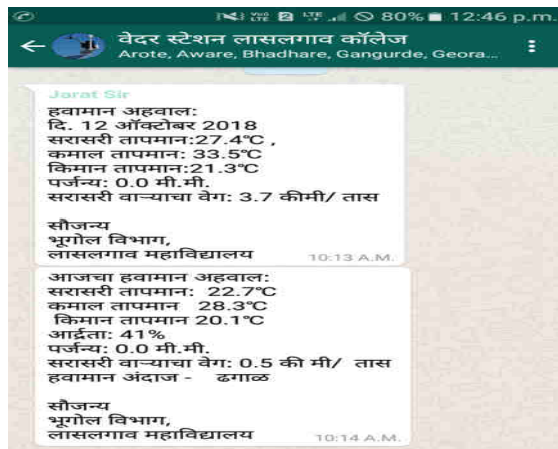
1. The institution installed the automatic weather station in the department of geography.
2. Teachers from department of geography created WhatsApp group “weather station Lasalgaon College”
3. The *Grampanchayat* official in the college periphery like *Gramsevak*, *Sarpanch* and farmers are added in the WhatsApp group.
4. Day to day weather forecast is posted on the WhatsApp group and also on the website of the college.
5. The information of weather forecast is in local Marathi language.

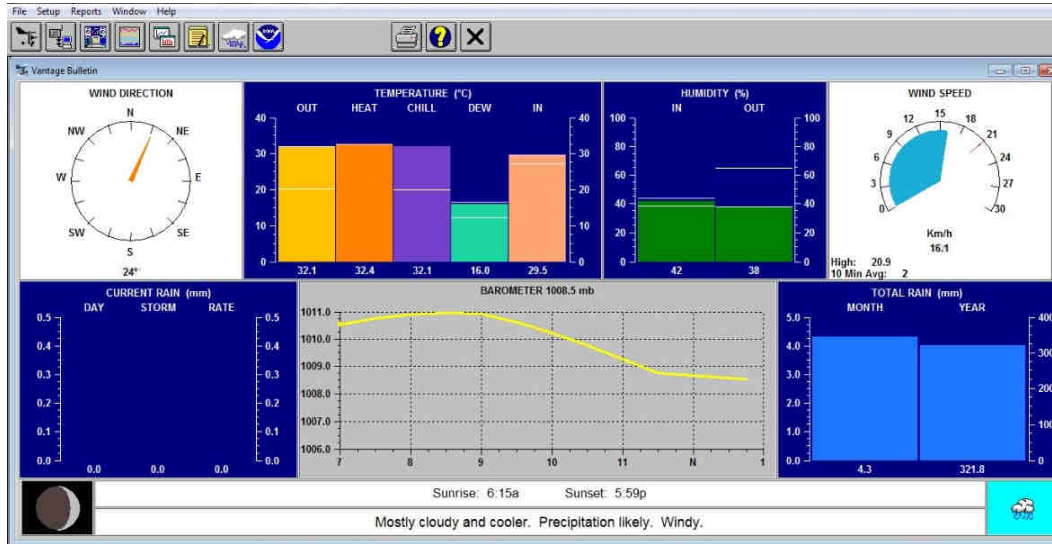
Evidences of Success:

It has helped to farmers.

Problems encountered and resources required:

No problems have been encountered.





Common assembly: National anthem and prayer

Goal:

1. To inculcate the value of national integration.
2. To promote the moral values.
3. To update students about curricular and co-curricular activities.

The Context:

At present our National life and unity have been broken into pieces by various divisive forces of communalism, racism, provincialism and religious fanaticism etc. As a result tension and ill feeling, murder and arson, riot and disturbance take place. The riot and fights have blackened the face of India. It is a bad sign that regional sentiments and provincialism have gained root in political scene. Considering the dehumanising factors of today's world, transforming human beings into machine, our college gives emphasis on inculcating universal human values in students by conducting common assembly for prayer and National Anthem every day.

The Practice:

1. Every day we conduct common assembly of students, teaching and support staff.
2. At first the prayer "*Itni shakti hamein dena data...*" is played. All the participants also chant the prayer.
3. After the prayer important notices regarding curricular and co-curricular activities are given.
4. In the assembly we felicitate the achievers of the college that also motivates the students.
5. Some times moral stories are told by the staff members.
6. At the end of the assembly, the national anthem is played.

Evidences of Success:

The students have become more self-disciplined and have developed team spirit.

Problems encountered and resources required:

No problems have been encountered.